

General Project Comments

- It is part the work to make your software easy to access and use
- For the final grading I will not have time to search for your links, code, directions, etc.
 - Put links to working site on Home page
 - Put code, documentation on Assembla site
 - Provide a package that is easy to download and run
- Test it using someone unfamiliar with accessing and using it
 - *Do not assume its use is self-evident!*
 - Can they follow your directions? User's guide?
 - Use someone similar to expected Users

Achieving System Qualities Through Software Architecture

What is "software architecture?"
Role in determining system qualities
Architectural views



Working Definition

"The software architecture of a program or computing system is the structure or structures of the system, which comprise software components, the externally visible properties of those components, and the relationships among them."

From *Software Architecture in Practice*, Bass, Clements, Kazman

Remember as: **Components, Interfaces, and Relations**

Examples

- An architecture comprises a set of
 - Software components
 - Component interfaces
 - Relationships among them
- Examples

Structure	Components	Interfaces	Relationships
Calls Structure	Programs	Program interface and parameter declarations.	Invokes with parameters (A calls B)
Data Flow	Functional tasks	Data types or structures	Sends-data-to
Process	Sequential program (process, thread, task)	Scheduling and synchronization constraints	Runs-concurrently-with, excludes, precedes

CIS 422/522 Fall 2012 4

Implications of the Definition

"The software architecture of a program or computing system is the structure or structures of the system, which comprise software components, the externally visible properties of those components, and the relationships among them." - Bass, Clements, Kazman

- Systems typically comprise more than one architecture
 - There is more than one useful decomposition into components and relationships
 - Each addresses different system properties or design goals
- It exists whether any thought goes into it or not!
 - Decisions are necessarily made if only implicitly
 - Issue is who makes them and when
- Many "architectural specifications" aren't

CIS 422/522 Fall 2012 5

Is it Architecture?

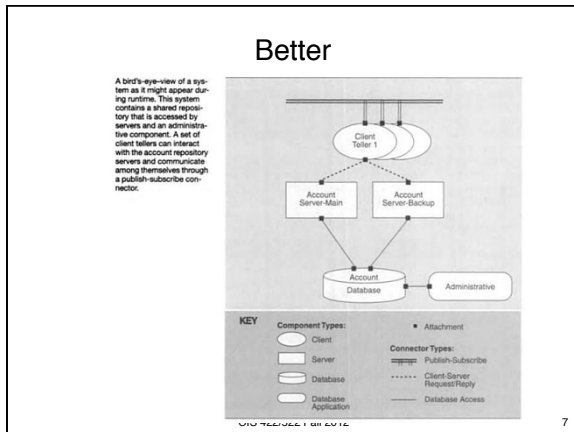
```

graph TD
    CP((Control Process (CP))) --- MODP((Prop Loss Model (MODP)))
    CP --- MODR((Reverb Model (MODR)))
    CP --- MODN((Noise Model (MODN)))
            
```

Typical (but uninformative) architectural diagram

- What is the nature of the components?
- What is the significance of the link?
- What is the significance of the layout?

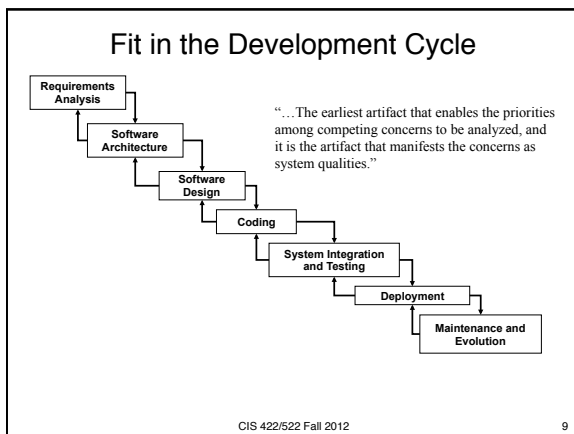
CIS 422/522 Fall 2012 6



The Role of Architecture

Which system or development characteristics are determined by architecture?
 What is the source of requirements?

8



Effects of Architectural Decisions

- What kinds of system and development properties are and are not affected by architecture?
- System run-time properties
 -
- System static properties
 -
- Production properties? (effects on project)
 -
- Business/Organizational properties?

- What is not affected?

CIS 422/522 Fall 2012 10

Effects of Architectural Decisions

- What kinds of system and development properties are and are not affected by architecture?
- System run-time properties
 - Performance, Security, Availability, Usability
- System static properties
 - Modifiability, Portability, Reusability, Testability
- Production properties? (effects on project)
 - Concurrent development, Scheduling, Time-to-market
- Business/Organizational properties?
 - Lifespan, Versioning, Interoperability

CIS 422/522 Fall 2012 11

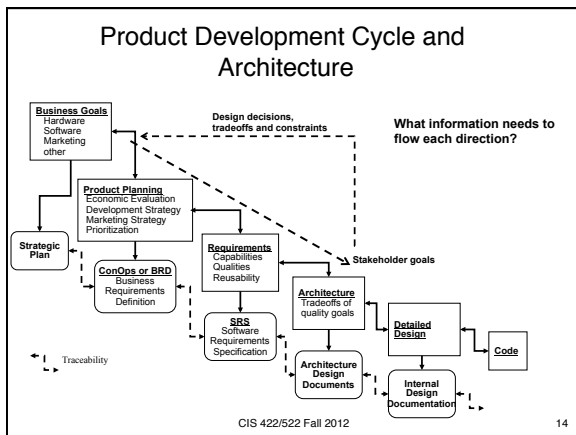
Importance to Stakeholders

- Which stakeholders have a vested interest in the architectural design?
 - Management, marketing, end users
 - Maintenance organization, IV&V, Customers
 - Regulatory agencies (e.g., FAA)
- There are many interested parties (stakeholders) with many diverse and often conflicting interests
- Important because their interests may defy mutual satisfaction
 - There are inherently tradeoffs in most architectural choices
 - E.g. Performance vs. security, initial cost vs. maintainability
- Making successful tradeoffs requires understanding the nature, source, and priority of these constraints

CIS 422/522 Fall 2012 12

Role of Architecture in Controlled Development

CIS 422/522 Fall 2012 13



Engineering of Software Architecture

- What are we trying to gain/maintain control of in the Architectural Design phase?
 - Profoundly effect system and business qualities
 - Requires making tradeoffs
- Control implies achieving system qualities by choice not chance
 - Understanding what the tradeoffs are
 - Understanding the consequences of each choice
 - Making appropriate choices at appropriate times
 - Choices made by people with appropriate skills and authority

CIS 422/522 Fall 2012 15

Implications for the Development Process

- Implies need to address architectural concerns throughout the development process:
- Understanding the "business case" for the system
 - Understanding the quality requirements
 - Designing the architecture to meet quality goals
 - Representing and communicating the architecture
 - Analyzing or evaluating the architecture
 - Implementing the system based on the architecture
 - Ensuring the implementation conforms to the architecture

Related Design Questions

- Create business case for the system
 - What is the "business" rationale or goal?
- Understanding the quality requirements
 - What are the design goals?
- Creating or selecting the architecture
 - What are appropriate components and relations?
 - What are the decomposition principles?
- Representing and communicating the architecture
 - How are the components and relations represented?
- Analyzing or evaluating the architecture
 - How do we decide if the architecture is any good?

Quality Requirements

Behavioral (observable)	Developmental Qualities
<ul style="list-style-type: none">• Performance• Security• Availability• Reliability• Usability <p>Properties resulting from the properties of components, connectors and interfaces that exist at run time.</p>	<ul style="list-style-type: none">• Modifiability(ease of change)• Portability• Reusability• Ease of integration• Understandability• Provide independent work assignments <p>Properties resulting from the properties components, connectors and interfaces that exist at design time <i>whether or not they have any distinct run-time manifestation.</i></p>

Architectural Views

CIS 422/522 Fall 2012 19

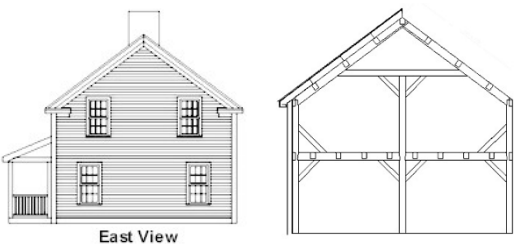
Which structures should we use?

Structure	Components	Interfaces	Relationships
Calls Structure	Programs (methods, services)	Program interface and parameter declarations	Invokes with parameters (A calls B)
Data Flow	Functional tasks	Data types or structures	Sends-data-to
Process	Sequential program (process, thread, task)	Scheduling and synchronization constraints	Runs-concurrently-with, excludes, precedes

- Choice of structure depends the *specific design goals*
- Compare to architectural blueprints
 - Different blueprint for load-bearing structures, electrical, mechanical, plumbing

CIS 422/522 Fall 2012 20

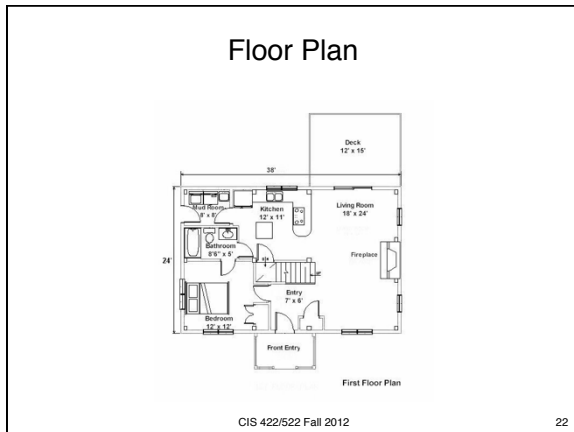
Elevation/Structural

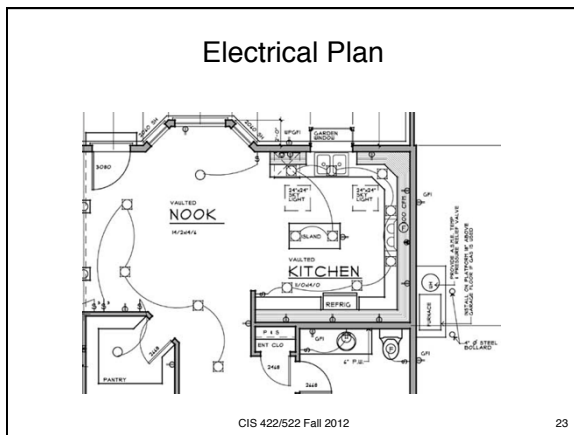


East View

© S. Faulk 2010 21

CIS 422/522 Fall 2012





Models/Views

- Each is a view of the same house
- Different views answer different kinds of questions
 - How many electrical outlets are available in the kitchen?
 - What happens if we put a window here?
- Designing for particular software qualities also requires the right architectural model or "view"
 - Any model can present only a subset of system structures and properties
 - Different models allows us to answer different kinds of questions about system properties
 - Need a model that makes the properties of interest and the consequences of design choices visible to the designer, e.g.
 - Process structure for run-time property like performance
 - Module structure for development property like maintainability

CIS 422/522 Fall 2012 24

For Your Projects

<p style="text-align: center;">Behavioral Qualities</p> <ul style="list-style-type: none"> • Performance • Security • Availability • Reliability • Security • Usability 	<p style="text-align: center;">Developmental Qualities</p> <ul style="list-style-type: none"> • Modifiability(ease of change) • Portability • Reusability • Ease of integration • Understandability • Independent work assignments • Subsetability
--	--

Which qualities are of interest for your projects?
Which structures should you use?

CIS 422/522 Fall 2012 25

Examples of Key Architectural Structures

- **Module Structure**
 - Decomposition of the system into work assignments or information hiding modules
 - Most influential design time structure
 - Modifiability, work assignments, maintainability, reusability, understandability, etc.
- **Uses Structure**
 - Determine which modules may use one another's services
 - Determines subsetability, ease of integration (e.g. for increments)
- **Process Structure**
 - Decomposition of the runtime code into threads of control
 - Determines potential concurrency, real-time behavior

CIS 422/522 Fall 2012 26

Summary

- Earliest set of design decisions – hence, most influential and hardest to change
- Determines a wide range of critical system, production, and business properties
- A product of tradeoffs between conflicting demands by different stakeholders
- Requirements come from product/business goals and subsequently affect them
- Realized at design time in different views
- Next look at specific views and their application

CIS 422/522 Fall 2012 27

Questions?

Wednesday: Guest Lecture
Prof. Michal Young
Testing (Quality Assurance)
